

# Partisol 2000i Air Sampler

Federal Reference Method ambient sampler featuring enhanced communication capabilities and long-term unattended operation.

The Thermo Scientific™ Partisol™ 2000i Air Sampler is designed to meet the regulatory monitoring requirements for PM-2.5, PM-10 and other particulate sampling methods. Developed on the renowned *iSeries* software platform design, this sampler also features USB ports for improved data downloads.

## Features

- U.S. EPA PM-2.5, PM-10 and PM-Coarse Reference Method
- Enhanced user interface and *iSeries* communication capabilities
- Improved data downloads
- Simplified pump exchange
- Modular parts platform

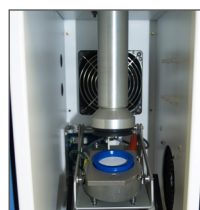
## Introduction

The Thermo Scientific™ Partisol™ 2000i sampler provides reliable and quiet operation, low maintenance requirements and a single-action filter exchange mechanism for added convenience.

In systems configured for sampling of PM-10 or TSP, a straight down-tube is used in conjunction with the appropriate size selective inlet. For PM-2.5 or PM-1 monitoring the straight through adapter is replaced with a cyclone or WINS impactor.



The simplified design and modular platform provides common electronics and easy exchange of the pump.



Single Filter Cassette

The *iSeries* communication capabilities of the Partisol 2000i sampler offers easier connectivity through an enhanced user interface.

## Additional *iSeries* features also include:

- Flash memory for increased data storage
- Enhanced ethernet connectivity
- Remote data access
- *iPort* communication software
- Large interface screen
- USB numeric keypad



Thermo Scientific™ Partisol™ 2000i Air Sampler

## Thermo Scientific Partisol 2000i Air Sampler

Specifications	
Filter holders and media	Accommodates 47mm filter in two sample positions For U.S. EPA PM-10 and PM-2.5 sampling: Teflon™ 2µm pore size membrane filter (regulation required) For U.S. EPA PM-10 reference sampling: Pallflex TX-40, quartz filter and Teflon™ materials
Sample flow control and reporting	Active flow control system using mass flow controller. Controls at rates ranging from 5 to 18 volumetric L/min. The sampler displays the current volumetric flow rate (L/min.)
Audit/calibration	Direct software support for single-point and multi-point audit/calibrations of the volumetric flow
Internal data storage	86 days of Interval data (stored every 5 minutes), 32 filter data records, and input data (30 minute default)
Data input and output	Keypad/display for data retrieval and user programming, RS232 interface, Wind vane/anemometer connection with 24 Vdc power output and 2 0-5 Vdc inputs for wind speed and direction, RS485 interface connection
Operational temperature	-40°F to 122°F (-40°C to 50°C)
Power requirements	2.2A @ 120 VAC, 1.1A @ 240 VAC
Physical dimensions	14.6" (37.1 cm) W x 18.5" (47 cm) D x 25.5" (64.8 cm) H (inlet system adds 30.4" (77.2 cm) to height)
Weight	82 lbs (37.2 kg)
Safety and electrical designations	CE: EN61326:1997 (Emissions & Immunity); EN61010-1:1995 (Safety) ETL: UL and CSA equivalent approval
Regulatory Designations	U.S. EPA PM-2.5 Reference Method: RFPS-0498-118 U.S. EPA PM-10 Reference Method: RFPS-1298-127 U.S. EPA PM-Coarse Reference Method: RFPS-0509-176

To maintain optimal product performance, you need immediate access to experts worldwide, as well as priority status when your air quality equipment needs repair or replacement. We offer comprehensive, flexible support solutions for all phases of the product life cycle. Through predictable, fixed-cost pricing, our services help protect the return on investment and total cost of ownership of your Thermo Scientific products.

**USA**  
27 Forge Parkway  
Franklin, MA 02038  
Ph: (508) 520-0430  
Fax: (508) 520-2800  
orders.aqi@thermofisher.com

**India**  
C/327, TTC Industrial Area  
MIDC Pawane  
New Mumbai 400 705, India  
Ph: +91 22 4157 8800  
india@thermofisher.com

**China**  
+Units 702-715, 7th Floor  
Tower West, Yonghe  
Beijing, China 100007  
Ph: +86 10 84193588  
info.eid.china@thermofisher.com

**Europe**  
Ion Path, Road Three,  
Winsford, Cheshire CW73GA UK  
Ph: +44 1606 548700  
Fax: +44 1606 548711  
sales.epm.uk@thermofisher.com

## Ordering information

### Partisol 2000i Air Sampler

Choose from the following configurations/options to customize your own Partisol 2000i Sampler

#### 1. Voltage options

A = 120 VAC 50/60 Hz (standard)

B = 220 VAC 50/60 Hz

#### 2. Inlet

C = U.S. TSP

E = PM-10 U.S. EPA

T = PM-10 traditional

S = SCC inlet combo (PM-10 US EPA 1st stage w/PM-2.5 SCC)

U = SCC inlet combo PM-10 traditional 1st stage w/PM-2.5 SCC

V = VSCC inlet combo PM-10 U.S. EPA 1st stage w/PM-2.5 VSCC

W = VSCC inlet combo PM-10 traditional stage w/PM-2.5 VSCC

M = WINS inlet combo PM-10 1st stage w/WINS impactor

1 = PM-10 U.S. EPA 1st stage w/PM-1 SCC

2 = PM-10 traditional 1st stage w/PM-1 SCC

N = No inlet

**Your Order Code: 2000i-**



Find out more at [thermofisher.com](http://thermofisher.com)

**ThermoFisher**  
SCIENTIFIC